

# ALL DECK® Construction Manual & Application Instructions

The ALL DECK® Coating System is a multi-layered system consisting of ¾ oz. Fiberglass Mat, ALL DECK Laminating Resin, ALL DECK Textured Basecoat, and ALL DECK Finish Resin. It adheres well to a variety of surfaces including: concrete, wood, gypsum board (Dens-Deck), cement board (Wonder Board), asphalt, metal, epoxy-stone, and magnesite/ diato. When properly applied, the waterproof system creates a uniformly textured, seamless, fire and skid resistant, safer walking surface. The ALL DECK Coating System is available in 26 standard colors and a wide variety of decorative options, including: multi-color treatments, faux finishes, 18 standard stencil patterns, and custom colors.

**READ THIS ENTIRE DOCUMENT THOROUGHLY BEFORE STARTING APPLICATION. IF YOU HAVE ANY QUESTIONS REGARDING PREPARATION, REPAIRS, APPLICATION, COMPATIBILITY, OR SUITABILITY OF THE ALL DECK PRODUCTS FOR YOUR PROJECT, CONSULT THE MANUFACTURER AT: 800-ALL DECK (255-3325).**

**For Correct Deck Preparation, See Appropriate Section Below.**

Use materials as labelled. Stir/ mix contents of containers thoroughly before applying. It is advisable to apply a test sample to ensure compatibility. Thoroughly clean, repair, and prepare the substrate before beginning the application. The ALL DECK products shrink, therefore, you must apply all products at their specified coverage rates. Allow each coat to dry thoroughly before continuing with the next coat. Drying time is directly affected by air temperature and sunlight; on cold or overcast days, drying time will be longer. The ALL DECK Coating System conforms to the surface it is applied over; therefore, proper preparation is vital to achieving an attractive, uniform finish. While wet, clean-up tools, spills and over-spray with water.

**Do Not:** add water to any ALL DECK Coating System product; substitute products; alter contents of containers; pierce the ALL DECK Coating System with nails, staples, screws, fasteners, or any other objects; use Fixall, Oxy (magnesite) Patch, Bondo, or materials containing silicone in conjunction with the ALL DECK Coating System.

**TO PREVENT WATER FROM RUNNING INTO A STRUCTURE:** Always build decks lower than the door sills and thresholds; slope/ grade decks away from the structure; slope/ grade decks at least ¼" per lineal foot; slope/ grade decks towards drains, sumps, or deck's edge.

**NEW CONSTRUCTION:** Treat the deck coating like other flooring (such as carpeting or hardwood) by applying the ALL DECK Coating System after all other trades have finished their work. However if necessary, you can temporarily protect the substrate from damage and deterioration during the construction phase by applying the Fiberglass Mat and ALL DECK Laminating Resin during the early stages of construction. If applied before the exterior walls are finished, cover the material up and over the Z Bar/ Flashing. When dry, protect the waterproofing membrane by placing building paper, or plastic over the dry membrane until all other construction work is completed. Before completing the ALL DECK Coating System application, make all necessary repairs and clean the membrane thoroughly.

## DECK PREPARATION

### Concrete

**WARNING:** Wear eye protection, protective clothing, and mask when working with acids.

Clean surface to remove all mildew, mold, grease, oil, dust, powder, or wax film with ALL DECK Deck Cleaner, TSP, or other mild detergent. Rinse thoroughly. Let dry. Concrete with a hard, slick surface must be etched with a solution of at least one part muriatic acid and three parts water or a commercial concrete etch. Rinse thoroughly with clean water. Let Dry. Use Bio-Control Prime & Seal on hard, slick, porous, or lightweight concrete to promote bonding. New concrete should cure for 30 days before applying the ALL DECK Coating System.

- Minor/Hairline Cracks:** Fill with ALL DECK Patching Compound.
- Badly Damaged and Spalled Areas:** Remove all loose, broken, or damaged material. Clean area. Coat area with Bio-Control Prime & Seal. Let dry. Then fill in the area with ALL DECK's Level Quick or Fast Patch. When dry, sand and feather with ALL DECK Patching Compound.
- Uneven Surfaces Such as Exposed Aggregate or Salt Finished Concrete:** Fill-in and level-out with ALL DECK Level Quick. (See Technical Info)
- Masonry Wall Joints:** At unflushed joints, create a waterproof cove using the ALL DECK Flexible Cove System: Fill joint with ALL DECK Caulking Compound. Apply 4" Fiberglass Mesh with two coats of ALL DECK Caulking Compound. Apply 4" Fiberglass Mat with ALL DECK Laminating Resin. Feather-out with thin coats of ALL DECK Patching Compound. (See Figures 1a, 1b & 1c)
- Moving Cracks:** Rout-out moving cracks to smooth, even-out, and straighten them. For best results, treat them like expansion joints.
- Waterproofing Above-Grade Expansion Joints, Control Joints, and Routed-Out Moving Cracks:** Do Not lay Fiberglass Mat directly over moving cracks, expansion joints, or control joints. Line cavity by looping Fiberglass Mat and ALL DECK Laminating Resin into cavity using a Radius Roller. Let Dry. Apply ALL DECK Caulking Compound directly into

cavity in thin layers (maximum depth ¼"), letting each layer dry before applying the next layer. When material is flush/ even with surface, apply ALL DECK Textured Basecoat and ALL DECK Finish Resin over caulked opening. (See Figure 2) (See Notes Below)

- Non-Waterproofing (On-Grade only) Expansion Joints, Control Joints, and Routed-Out Moving Cracks:** Apply Fiberglass Mat and ALL DECK Laminating Resin to within ¾" of each side of cavity opening. Feather-down edges of Fiberglass Mat with ALL DECK Patching Compound. If you want to hide the opening, apply ALL DECK Caulking Compound directly into cavity (maximum depth ¼"), in thin layers, letting each layer dry before applying next layer. When material is even/ flush with surface, apply ALL DECK Textured Basecoat and ALL DECK Finish Resin over caulked opening. Or, you can place plastic or wood joint strips into the openings, or leave them exposed, then apply All Deck Textured Basecoat and All Deck finish Resin. (See Figure 3)

- Swimming Pool Decks:** Stop ALL DECK Coating System at mastic joint between deck and coping. If needed, use pool paint to coat coping.
- Cantilevered Decks:** Wrap fiberglass over the top edge, stopping ¼" from the bottom edge. Feather-out the edge of the fiberglass with ALL DECK Patching Compound.



Figure 1a

Figure 1b

Figure 1c

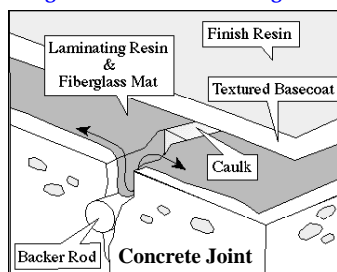


Figure 2

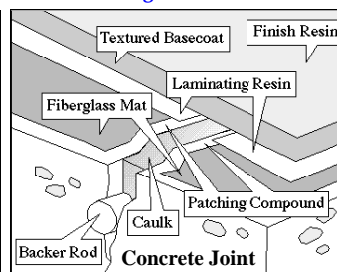


Figure 3

**NOTES:** To support the Fiberglass Mat and ALL DECK Caulking Compound in cavities that are deeper than ¼", use Backer Rod slightly wider than the widest part of the cavity. Stuff Backer Rod into the cavity with a backer rod tool or the pointed handle of a paint brush. Do Not apply ALL DECK's Level Quick or Fast Patch over expansion joints. (See Figures 2 & 3) moving cracks, control joints, or (See Concrete #'s 6 & 7 Above)

# DECK PREPARATION *(Continued)*

## Chip/Particle Board & OSB (Oriented Strand Board)

**NOTE:** Refer to OSB manufacturer for specifications and compatibility. *Do Not* use OSB, or any other board, if it is pre-sealed with wax, silicone, or oil on *both* sides. See Plywood Section below for Preparation Procedure.

1. Install unsealed, lightly sanded, porous side up.
2. Seal surface with **ALL DECK Clear Sealer** before applying the **ALL DECK Coating System**.

## Tongue & Groove Wood

**NOTE:** See Plywood Section below for Preparation Procedure.

1. Install Seam Metal over all joints.

## Planked or Slatted Wood

**NOTE:** See Plywood Section below for Preparation Procedure.

1. Apply Fiberglass Mat and **ALL DECK Laminating Resin** over the entire surface. Let dry.
2. Cut-out fiberglass between planks. Leave approx.  $\frac{1}{8}$ " of wood exposed on top edges of planks.
3. Apply **ALL DECK Textured Basecoat** and **ALL DECK Finish Resin**.
4. Using drop cloths to protect areas below, let materials ooze over the sides of planks, completely burying the edge of the fiberglass mat.

## Plywood or Other Wood Sheeting

**Wood Specifications:** Minimum  $\frac{3}{4}$ " CCX flooring grade; exterior glue; plugged and sanded on at least one side; finished side up.

1. Slope wood  $\frac{1}{4}$ " per lineal foot for proper drainage.
2. *Do Not* use roofing or drywall nails. Use marine grade or galvanized 3 – 3  $\frac{1}{2}$ " ring shank nails or 3  $\frac{1}{2}$  – 4" cement coated drive screw nails to install wood.
3. Nail on joists every 3 – 4", counter-sinking nails. The ends of the wood must be blocked.
4. Use clean, oil free 2'x1 $\frac{1}{2}$ " pieces of 28 gauge galvalume Seam Metal to cover all wood joints. Seam Metal can be pickled with vinegar, or wiped with non-oily solvents to remove oil and dirt. Since Seam Metal is sharp; gloves are recommend for safer handling of Seam Metal.
5. *Do Not* overlap ends of Seam Metal. *Do Not* use roofing or drywall nails. Use 1 $\frac{1}{4}$ " galvanized box nails, or  $\frac{1}{4}$ " crown galvanized staples with  $\frac{1}{2}$  –  $\frac{3}{4}$ " leg to secure ends of each piece of Seam Metal. Nail or staple down each side of Seam Metal every 1". Angle staples toward center of Seam Metal (90°). *Do Not* nail or staple into wood joint. Nail or staple every 2" when using **ALL DECK FasTac Construction Adhesive**. Apply a  $\frac{1}{8}$ " zig-zag bead of **FasTac** on underside of Seam Metal before placing over wood joints. (See Figures 4a & 4b)
6. Counter-sink nails so knife won't skip on nail heads when feathering-out with **ALL DECK Patching Compound**. (See Figures 4b & 4c)
7. **Flashing (deck edge):** Minimum 2" x 2" galvanized "L" (no gravel stop) with  $\frac{1}{4}$ " drip edge, 28 gauge. Stagger nails every 2 – 3". Avoid

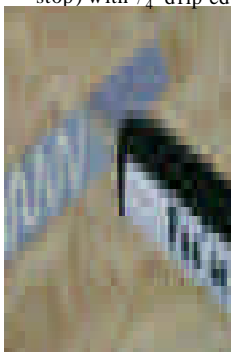


Figure 4a



Figure 4b

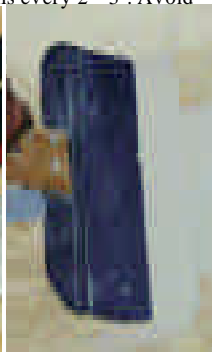


Figure 4c

buckling/ rippling. Overlap flashing 3 – 6". Place **ALL DECK Caulking Compound** between overlapped flashing until a small amount oozes out. Wipe off excess caulk with a clean rag.

8. **Flashing (walls):** Minimum 3" x 3" galvanized "L", 28 gauge. Stagger nails every 2 – 3". Avoid buckling/ rippling. Overlap flashing 3 – 6". Place **ALL DECK Caulking Compound** between overlapped flashing until a small amount oozes out. Wipe off excess caulk. If flashing cannot be nailed to stucco or masonry walls, run a wide bead of **ALL DECK Caulking Compound** in joint. (See *Concrete Section #4 Flexible Cove System*)
9. Use 2 - 3 thin coats of **ALL DECK Patching Compound** to fill-in, patch, and feather-out knots, joints, flashing and counter-sunk nails. Apply the first coat of **ALL DECK Patching Compound** with a 6" putty knife. Let dry. Apply second coat with a 10" broad knife. *Do Not* sand or abrade Seam Metal, or flashing. Feather-out Seam Metal so it is buried in the material and hidden like drywall joints. (See *Figure 4c*) (See *Technical Info*)
10. For best results, use a hand held power planer or router, to create a very shallow channel along all edges of wood. Channel should be slightly more than  $\frac{3}{4}$ " wide. Apply **FasTac Construction Adhesive** to under side of Seam Metal before placing in channel, so it is level with the deck surface. Nail or staple, and patch as directed. (See *Figures 4a, 4b & 4c*)
11. If wood needs to be sloped/ graded, apply a layer of Fiberglass Mat and **ALL DECK Laminating Resin** over entire deck surface (See *Laminating Section*). Mark areas that need sloping/ grading. Apply **ALL DECK Level Quick** and feather-out to the edges. Let dry. Apply another piece of Fiberglass Mat and **ALL DECK Laminating Resin** over sloped/ graded area. Feather-out edges of new piece of Fiberglass Mat with **ALL DECK Patching Compound**.
12. **Treated Wood:** Apply a test sample to ensure adhesion. Refer to wood and treatment manufacturer's specifications for treatment method, moisture limitations, curing period, etc. *Do Not* apply the **ALL DECK Coating System** over newly treated wood containing silicone, oil, or wax. Let treated wood weather for several months before coating. Lightly sand treated wood before applying coating.

## Metal

1. To prevent rust from breathing up through completed coating application, replace all rusted-out metal before applying the **ALL DECK Coating System**.
2. Prime metal that can rust with a rust inhibiting primer such as Zero-Rust. Do not sand or abrade primed metal.
3. Clean and remove all rust, dirt, grease, oil, mildew, wax, and loose paint.
4. If metal surface is patterned, first prime with rust resisting primer/Zero Rust. Then smooth-out with **ALL DECK Level Quick**. (See *Technical Info*)

## Birdseed, Rubber Chips or Epoxy Stone

1. Remove all loose material. Clean area.
2. Seal entire surface with **Bio-Control Prime & Seal**.
3. Fill minor defects with **ALL DECK Patching Compound**.
4. **Large Damaged Areas:** Fill-in with **All Deck Level Quick**. (See *Technical Info*)
5. Feather-out repairs with **ALL DECK Patching Compound**. (See *Figure 5*)

## Asphalt

1. Repair instructions are the same as for concrete.
2. New asphalt should cure for at least 3 – 4 months before applying the **ALL DECK Coating System**.
3. If asphalt must be coated immediately, apply a coat of water-based asphalt emulsion first. Let dry. Then apply **ALL DECK Coating System**.

## Previously Coated Surfaces

1. Remove all loose, peeling, unbonded, damaged, failing, or suspect material.



Figure 5

## DECK PREPARATION *(Continued)*

2. Fill all minor defects with **ALL DECK Patching Compound**. (See Figure 5)
3. **Large, Damaged Areas:** Use **ALL DECK's Level Quick** or **Fast Patch**. (See Technical Info)

**NOTE:** Apply a test sample to ensure compatibility. The **ALL DECK Coating System** can be applied over other coatings. However, for best results it is recommended that previous coatings be removed whenever possible, especially if the composition of the previous coating is unknown.

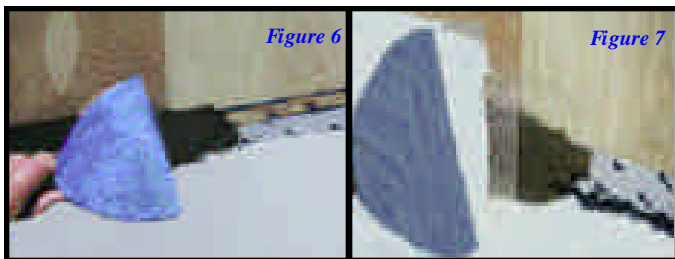
### Ceramic & Clay Tile

1. Remove all loose, broken, or cracked tile. Clean area.
2. Scarify highly glazed tile (remove glaze). Clean area after scarification.
3. Fill all minor defects with **ALL DECK Patching Compound**. (See Figure 5)
4. **Large, Damaged Areas:** Use **ALL DECK's Level Quick** or **Fast Patch** to fill-in and level-out surface.
5. To hide the tile pattern and grout lines, apply a very thin slurry coat of **ALL DECK Level Quick** over entire area.

### Magnesite & Diato

1. **Small Number of Non-moving, Minor, or Hairline Cracks:** Fill-in with **ALL DECK Patching Compound**. (See Figure 5)
2. **Badly Damaged Areas:** Remove all loose and broken material. Replace removed sections with  $\frac{3}{4}$ " plywood (See Plywood Specifications). Leave a  $\frac{1}{2}$  - 1" gap between magnesite/diato and plywood. Nail plywood to joist using cement coated drive screw nails. If ends of plywood are not on joists, hammer nails into subfloor at a 45° inward angle. Fill-in and feather-out repair work with **ALL DECK Level Quick** blending plywood edge to magnesite. Nails hammered into the gap act like mini rebar, to reinforce the repair. Let Dry. Use 4" Fiberglass Mesh and **ALL DECK Caulking Compound** to cover cement joints. Feather-out repairs with **ALL DECK Patching Compound**. (See Figures 6 & 7) (See Technical Info)

**NOTE:** When removing magnesite/diato, removed sections should be at least 4' x 4', so new wood spans the joists. To avoid future problems, removal is recommended, if there are a large number of minor or hairline cracks in a concentrated area.



## LAMINATING RESIN

### Fiberglass Mat & Laminating Resin

**Class "A" Fire Rated Application:** Apply **ALL DECK Coating System** over a non-combustible substrate (cement or gypsum board, concrete, Class A roofing membrane, or magnesite). Apply a coat of **Bio-Control Prime & Seal** first. Use 2 oz. Fiberglass Mat in place of  $\frac{3}{4}$  oz. Fiberglass Mat. Apply **ALL DECK Laminating Resin** at a coverage rate of 35 sq. ft. per gal.

**Class "B" Fire Rated Application:** Apply **Bio Control Prime & Seal** over combustible surface. Before installing Seam Metal, fill joints with **ALL DECK Patching Compound**. Use 2 oz. Fiberglass Mat in place of  $\frac{3}{4}$  oz Fiberglass Mat. Apply **ALL DECK Laminating Resin** at a coverage rate of 35 sq. ft. per gallon.

See Warning Page 8

1. To ensure proper adhesion, clean all surfaces. Surfaces must be dust free, clean of all debris, wax, grease, dirt, powder, mildew, and oil.
2. Coat over thresholds and all other transitions from horizontal to vertical surfaces.

3. Cove up walls, posts, stanchions, rail bases, etc.; cove down into drains and scuppers; cove over deck edges. (See Figure 10)

### Fiberglass Mat

1. Place Fiberglass Mat on deck, working with 1 piece at a time.
2. To avoid wrinkling, cut Fiberglass Mat into pieces no more than 25' long.
3. On decks more than 4' wide, place one piece of Fiberglass Mat on the deck at a time, applying **ALL DECK Laminating Resin** to the entire length of the piece of fiberglass.
4. Cove up walls, over "Z bar" or "L" metal flashing, 1½ - 2". Stop fiberglass  $\frac{3}{8}$  -  $\frac{1}{2}$ " from inside corner of the metal.
5. Cove under sliders and threshold, if possible. If there isn't enough room under threshold or slider, bring fiberglass onto threshold  $\frac{1}{2}$ " (enough to seal hairline gap between slider and deck). Fill gap with **ALL DECK Caulking Compound** first. Slider or threshold must be secure, because movement can cause a tear or crack in the coating.
6. Stop Fiberglass Mat  $\frac{3}{8}$  -  $\frac{1}{2}$ " from edge of deck.
7. Fiberglass Mat must cove up rail bases, posts, stanchions, etc.
8. **Do Not** overlap pieces of Fiberglass Mat.
9. To ensure a straighter seam between pieces of Fiberglass Mat, use the double-cut technique to splice-in new pieces of fiber glass. **Double-Cut Technique:**
  - a. Lay a new piece of Fiberglass Mat, over the fiberglass already on the deck. (See Figures 8a, 8b & 8c)
  - b. Cut through center of both pieces, leaving a perfectly matched seam.
  - c. Remove excess fiberglass.

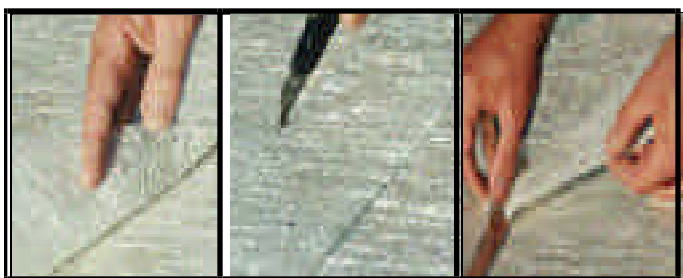


Figure 8a

Figure 8b

Figure 8c

10. Align pieces of Fiberglass Mat so there is a  $\frac{1}{8}$ " gap between pieces. This allows fiberglass to stretch when saturated with **ALL DECK Laminating Resin**. If factory finished edge of fiberglass is uneven, use the double-cut technique to straighten edge.
11. Repeat procedure until entire surface is covered. (See Figures 8a, 8b & 8c)

**NOTE:** Don't wait for the laminated fiberglass to dry before continuing with the next piece. But, don't work yourself into a corner, with no way out. **Do Not** walk or drag anything across wet fiberglass.

### Laminating

Coverage rate: 40 - 60 sq. ft. per gallon. Drying Time: Approx. 4 - 6 hrs. Use as is.

The coverage rate depends on the porosity of the substrate. Laminating is the most important step of the application procedure because it bonds the Fiberglass Mat to the substrate, forming the flexible membrane that is the basis of the waterproofing system. The **ALL DECK Laminating Resin** shrinks approximately 40% during the drying process. Therefore, it is crucial to apply the correct amount of material to achieve the desired results. When wet, fiberglass strands, like paper maché, conform to most shapes, so surfaces must be clean and smooth before starting application.

#### Coves & Edges:

1. Using a 4" wide polyester paint brush, laminate coves and edges first.
2. Completely saturate fiberglass, working the **ALL DECK Laminating Resin** in until fiberglass conforms to shape of cove. (See Figures 9a, 9b & 9c)
3. **If Fiberglass Mat is not conforming to a cove or any other curved surface:**
  - a. Use the blade tip of a utility knife to soften the fibers and a Fiberglass Roller to smooth-out the fibers. (See Figures 9a, 9b & 9c) Continue until fiberglass strands conform to curved surface.
  - b. Repeat procedure, adding **ALL DECK Laminating Resin** as needed.

# LAMINATING RESIN *(Continued)*

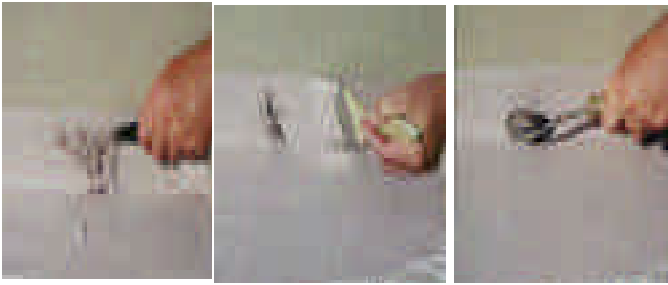


Figure 9a

Figure 9b

Figure 9c

**NOTE:** For best results, *Do Not* coat entire deck edge at one time. Cut-in 5 – 6' at a time making sure that you roll-out the center immediately, always working wet into wet.

## Rolling Laminating Resin

**NOTE:** *Do Not* dry roll material. Dry rolling is dipping the roller into a pail of material and rolling it on. The **ALL DECK Laminating Resin** will not penetrate the Fiberglass Mat or bond it to the substrate if it is dry rolled. The proper procedure is to pour a puddle of material onto the deck and roll out the material from the puddle. Furthermore, dry rolling causes pin holes & air bubbles. (See Figure 13)

**Roller Specifications:** Use a 9" x 3/4" nap roller cover with a 5' extension handle. *Do Not* use foam or texture roller covers. Roller frame must spin freely.

1. First cut in 5 – 6' on both sides of the deck.
2. Next, laminate center of the section by pouring approximately 1/2 gallon of **ALL DECK Laminating Resin** on top of fiberglass. (See Figure 13)
3. Using moderate pressure, work puddle of **ALL DECK Laminating Resin** into Fiberglass Mat, until thoroughly saturated. **ALL DECK Laminating Resin** must penetrate the mat and soak into substrate.
4. Draw the puddled material towards you with the roller.
5. After coating approx. 5', using the same puddle (add more resin, if necessary) roll a second thick layer over the same area.
6. Without putting any pressure on the roller, float the second layer on without leaving any small puddles or thick spots.
7. Repeat the process until the entire surface is covered.

### Bubbles:

While wet, if there is foreign matter under the fiberglass causing a bubble, cut fiberglass open and remove the matter. Using a Fiberglass Roller, roll the strands back down, until smooth. (See Figure 12)

### Wrinkles:

While wet, wrinkles can be repaired by using a Fiberglass Roller to chop-up and roll-down wrinkles. Add **ALL DECK Laminating Resin** and roll out the wrinkles until flat. (See Figure 12)

## Deck Drains & Scuppers

1. Apply the entire **ALL DECK Coating System** around and into drains and scuppers, except PVC which **ALL DECK** can't bond to. Apply the system into scuppers and drains at least 1/2" beyond joint. For proper drainage, scupper, drain, and grate should be lower than the surrounding deck surface. (See Figure 10)
2. If there aren't enough drains, or scuppers install additional, strategically placed, drains or scuppers. Wherever possible, use channel drains, since they function as both a drain and an expansion joint in one unit.

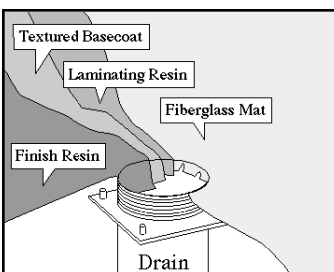


Figure 10

**NOTE:** *Do Not* install deck drains, scuppers, rails, stanchions or posts on top of or through the **ALL DECK Coating System** or the **Fiberglass Mat**.

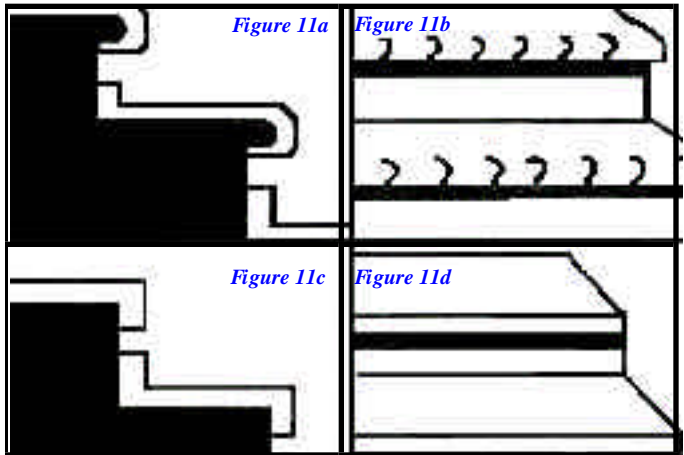
**Deck Coating System** is applied. Apply the **ALL DECK Coating System** 2 - 4" beyond the joint between all horizontal and vertical surfaces. (See Figure 10)

## Stairs, Steps & Stairways

### Bullnose (rounded) edge:

Fiberglass Mat is laid over the step and cut off underneath the bullnose.

(See Figures 11a & 11b)



### Square edge:

Fiberglass mat is laid over stair edge 2 – 3" and cut off. (See Figures 11c & 11d)

**NOTE:** Each step (bullnose and square edge) should be fiberglassed 1/8 – 1/4" from the previous step. Fiberglass seams should be on the riser, not on the tread, or the edge of the step. Feather-out seams with **ALL DECK Patching Compound**. (See Figure 5)

## DETAILING FIBERGLASS

After Fiberglass Mat has been laminated and allowed to dry, the surface must be detailed before proceeding with the application. Use **ALL DECK Patching Compound** to patch-in seams, feather-down edges of fiberglass, eliminate air bubbles, repair wrinkles, and correct any other defects on the laminated surface. (See Technical Info)

## Repairing Fiberglass Defects

### Hollow Spots and Bubbles:

Suspect areas will usually have a large number of pinholes in the area of the bubble. The coating may even appear to be raised. The best way to tell if there is a hollow spot is by rubbing your fingertips on the surface of the area.

### Small Bubbles:

Bubbles no larger than a half dollar should be cut-out, patched-in, and feathered-out with two thin coats of **ALL DECK Patching Compound**. (See Figures 14 & 15)

### Bubbles & Unbonded Fiberglass:

Large bubbles or unbonded areas should be completely removed and re-fiberglassed using the double-cut repair method. (See Figures 8a, 8b & 8c)

Figure 12



Figure 13

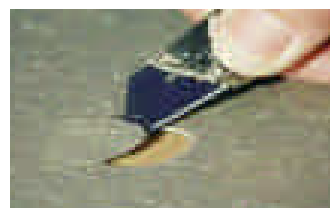


Figure 14

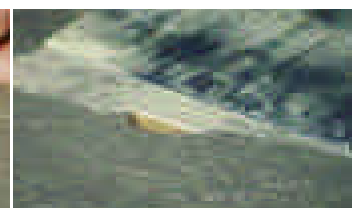


Figure 15

## DETAILING FIBERGLASS *(Continued)*

1. Lay a clean, unwrinkled new piece of Fiberglass Mat over section to be removed. The new piece should be a little larger than the piece being replaced.
2. Using a utility knife with a sharp blade, double-cut through both pieces of Fiberglass Mat at the same time.
3. Remove the damaged piece of fiberglass. (See Figures 8a, 8b & 8c)
4. Remove any foreign matter, objects, or unwanted material.
5. Trim  $\frac{1}{8}$ " off the top edge and one side of the new piece of fiberglass before placing it into the bare spot.
6. Use a 4" wide polyester paint brush and **ALL DECK Laminating Resin** to laminate the patched-in piece of fiberglass. Be sure the **ALL DECK Laminating Resin** saturates the fiberglass thoroughly. Let dry. Trimming down two edges of the new piece of fiberglass prevents it from puckering when the **ALL DECK Laminating Resin** is applied over it. (See Figure 16)
7. Patch-in and feather-out the repair with 2 to 3 thin layers of **ALL DECK Patching Compound**. Allow material to dry between each application. (See Figure 17)



Figure 16



Figure 17



Figure 18

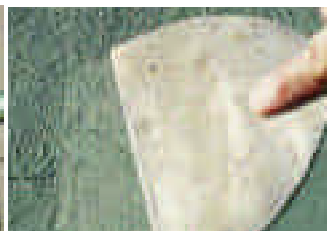


Figure 19

8. When dry, use 80 - 100 grit sandpaper to lightly sand the repaired area. Then brush or roll a thin coat of **ALL DECK Laminating Resin** over the sanded area.
9. Use two thin coats of **ALL DECK Patching Compound** to fill-in and feather-out any marks left by the repair. (See Figure 19)
10. When dry, lightly sweep-off deck before beginning the next step of the application process.

### Wrinkles:

1. After the **ALL DECK Laminating Resin** has dried, use a broad knife or 4" wide razor scraper to eliminate any wrinkles that developed during the drying process. Shave down the top of wrinkles until they are flush/ even with the deck's surface. (See Figure 18)
2. Fill-in and feather-out wrinkle with two thin coats of **ALL DECK Patching Compound**. Let each coat dry. (See Figure 19)

### Patching Seams:

1. Fill the gaps between pieces of fiberglass by applying two thin coats of **ALL DECK Patching Compound** with a 6" wide putty knife. Let each coat dry before applying the next coat. (See Figure 19)
2. Squeegee each coat on. Avoid creating humps or ridges over the seams. Lightly sand down any humps or ridges that form.

### Edges:

On decks with flashing on the outer edges, the fiberglass should stop  $\frac{3}{8}$  -  $\frac{1}{2}$ " back from the outside edges. Feather-out all edges of the fiberglass to the edge of deck with **ALL DECK Patching Compound**.

## TEXTURED BASECOAT

### Textured Basecoat Kit

*Coverage rate: 100 sq. ft. per gallon Kit. Drying Time: Approx. 2-4 hrs.*

**See Warning Page 8**

*The **ALL DECK Textured Basecoat Kit** consists of one gallon of **ALL DECK Basecoat Resin** and one container of **ALL DECK Basecoat Aggregate**. **Mix one container of basecoat aggregate to one gallon of resin in a 2 or 5 gallon container**. Stir until a smooth pancake batter consistency is achieved. A 5 gallon pail and mixing paddle connected to an electric drill may be used when mixing two or more **ALL DECK Textured Basecoat Kits**. When mixed together, a one gallon kit yields approximately  $1\frac{3}{4}$  gallons of material.*

There are 3 different aggregate formulas that allow the **ALL DECK Textured Basecoat** to be rolled, brushed, troweled, or sprayed onto a surface. ***Spray (regular) Formula*** is used to spray or trowel on the material. ***Roll Formula*** is used to roll or brush on the material. ***Sports Court Formula*** is sprayed on and used for playing surfaces when a finer textured profile is needed. When ordering an **ALL DECK Textured Basecoat Kit**, specify the aggregate formula that is appropriate for your application.

### Stippling, Cutting-In, Blending:

Stippling coves, posts, rail bases, and repaired areas produces a simulated texture that makes these areas blend-in with the rest of the coated surface. If stippling is not done, brush marks will be visible through the finished coating application.

1. To properly seal the fiberglassed edges of coves, posts, stanchions, rail bases, and repairs, use a 4" wide polyester paint brush, to brush on a thin coat of **ALL DECK Textured Basecoat** over all edges; always working a few feet at a time.
2. Using a dry 4" wide polyester brush held perpendicular to the deck surface, stipple wet material over coves, posts, repairs, rail bases, and edges to hide brush marks.

### Spray Application

1. Use 15" wide masking paper to protect all poles, posts, rails, doors, sills, sliders, and walls.
2. Tape paper two widths high (30"), on all doors and sliders.
3. Use a chalk line to snap a straight cove line on walls. Tape paper to walls using the chalk line as a guide.
4. Blend and stipple coves. (See Above)
5. Pour the **ALL DECK Textured Basecoat** mix into a hopper gun. Spray a little on a piece of cardboard or paper to adjust the spray pattern. Adjust gun and air pressure until you achieve the desired pattern.
6. First, lightly fog-in stippled coves, deck edges, posts, stanchions, and rail bases. Next, spray entire surface at normal density, including coves, posts, stanchions, rail bases, outer edges, and poles.
7. Spray material from hopper gun, using a circular motion while moving back and forth across the deck to prevent visual detection of a spray pattern. Avoid spraying thick and thin spots. Try to have an even, consistent pattern over the entire deck surface.

*(Refer to Technical Info for additional information on compressor, gun, and settings.)*

**NOTE:** If the **ALL DECK Textured Basecoat** mix is too thick, the texture will stand up like mountains, looking like stucco. If the mix is too thin, the texture will lie down too flat. The most effective and best looking texture pattern looks like individual raised, round droplets.

### Roll Application

***Roller Specifications:** Use a 9" x  $\frac{3}{8}$ " nap roller cover with a 5' extension handle. Do Not use foam or texture roller covers. Roller frame must spin freely.*

1. Pre-moisten roller cover with water. Spin out any excess water. This will help prevent the roller cover from absorbing moisture from the coating, and prevent the coating from clumping on the roller.
2. Blend and stipple coves. (See Above)

## TEXTURED BASECOAT *(Continued)*

3. Pour a small puddle of **ALL DECK Textured Basecoat** mix onto the surface and roll-out. (See *Figure 13*) *Do Not* dip roller into pail. To have a uniform pattern, two thinner layers are recommended. Apply the first thin layer in a North/ South direction. Let dry. Apply the second thin layer across the surface in an East/ West direction. Let dry.
4. To eliminate clumps in the coating, move the roller in a circular motion over the wet clumps using moderate pressure; continue rolling. Repeat the procedure until an acceptable pattern is achieved.
5. To avoid clumping, *Do Not* roll back into material as it sets up. If needed, wait until the section is thoroughly dry before adding more **ALL DECK Textured Basecoat**.
6. If the textured pattern has high ridges, the material has been applied too heavily. To eliminate the ridges, remove the excess wet material by pressing down very hard on the roller while squeegeeing the excess material towards you. Spread the excess material in another area. Repeat the process until a satisfactory low profiled pattern is achieved.

### Trowel Application

Use Spray (regular) Formula aggregate. Use a 10 - 12" wallboard knife. On larger jobs, a knife with an extension handle may be helpful.



Figure 20

1. File-off sharp corners of knife to prevent uneven grooves from forming in surface.
2. *Do Not* trowel **ALL DECK Textured Basecoat** onto a hot surface. Heat causes the material to dry too fast and the material will ball up as you trowel-out your pattern.
3. Depending on the size of the deck, pour between ½-1 gallon of **ALL DECK Textured Basecoat** onto deck.
4. Holding the trowel knife at approximately a 45° angle, place the blade on the deck with enough pressure to slightly flex/ bend the blade. (See *Figure 20*)
5. Squeegee material onto deck at ¼" thickness. *Do not* float material onto the deck. (See *Figure 20*)
6. Working in sections, spread material evenly, one section at a time.
7. While material is still wet you can trowel a pattern into surface.
8. For a simple pattern, lay the knife flat and pull it to create flat, straight rows.
9. For a fan or shell pattern, lay knife flat and make a row of connected half circles. Stagger each row.
10. After the **ALL DECK Textured Basecoat** has dried, remove unwanted ridges by shaving them down with the trowel knife, or sanding them down with 80 grit sandpaper.
11. When dry, use a small putty knife and a small amount of **ALL DECK Textured Basecoat** to correct defects such as air bubbles or bare spots.

## FINISH RESIN

### Finish Resin

Coverage rate: 125 sq. ft. per gallon. Drying Time: Approx. 1 hr. Use as is.

See Warning Page 8

**NOTE:** Before applying the **ALL DECK Finish Resin** check the Batch Numbers on all containers of Finish Resin. Batch Numbers should match. (See *Technical Info*)

**Roller Specifications:** Use a 9" x ¾" nap roller cover with a 5' extension handle on flat surfaces. *Do Not* use foam or texture roller covers. Roller frame must spin freely.

1. Before applying the **ALL DECK Finish Resin**, lightly skim the coated surface with a broad knife to remove loose clumps, high ridges, and overspray. Sweep clean before continuing.
2. Use a 4" polyester paint brush to cut-in coves, outer flashing, deck edges, posts, poles, stanchions, etc., first.
3. Work in areas no larger than 6 - 8' at a time. Always working with a wet edge (wet into wet).

4. *Do Not* let edges, posts, coves, rail bases, etc., dry before rolling **ALL DECK Finish Resin** over the center of deck.
5. To avoid lap marks and streaks, apply the **ALL DECK Finish Resin** in the coolest part of the day, always rolling wet into wet.
6. Repeat process until entire deck is coated.

**NOTE:** The **ALL DECK** materials can be walked on as soon as they are dry to the touch.

## DECORATIVE *(Optional)*

Decorative finishes are not part of the standard **ALL DECK Coating System**. They are not covered under the **ALL DECK Limited Material Warranty**. *Do Not* apply them during the hottest part of the day. If the **ALL DECK Finish Resin** dries too quickly, the **Confetti Finish** may not stick to it. Contact ECS for detailed information on customized designs, faux finishing, and stenciling techniques. (See *Technical Info*)

### Confetti Finish

Coverage Rate: 400 sq. ft. per 4 lb pail. Drying Time: Approx. ½ hr.

1. Colors and particle sizes are custom blended by the manufacturer.
2. Selected colors are mixed together and applied at one time.
3. The application is done by one person rolling the **ALL DECK Finish Resin** onto the deck surface while a second person simultaneously broadcasts the dry particles, using a hopper gun, glitter gun, or by hand.

**NOTE:** If the **ALL DECK Finish Resin** is applied too thick, it may bury the **Confetti Finish** particles. Contact manufacturer for additional information.

### Stencil Applications

Stencil size is 4' x 8'. Stencils are made of reusable 60 mil polyethylene.

1. Lay out design before starting decorative application by using a chalk line to square-off and align pattern over entire surface.
2. Use two stencils of the same pattern when working on areas over 100 sq. ft., or when spraying material onto surface.
3. Use easy release masking tape to tape stencils in place; making sure tape doesn't cover surface to be coated. Tape second stencil end-to-end, or side-to-side, to patterned edges of first stencil for exact match.
4. Apply material over the first stencil and halfway through the second stencil before stepping first stencil over end-to-end, or side-to-side with second stencil. Continue material application repeating process until entire surface is coated.
5. It may be necessary to cut the stencils to make the pattern match around posts, pipes, corners, or unusually shaped areas. *Do Not* cut stencils until after the main body of the surface is coated. Tape stencil pieces together to fit unusually shaped areas.
6. Material can only be sprayed or troweled through stencils. Material must be mixed to a thicker consistency than normal so it won't seep under the stencils during the application process.

## REPAIRS

### Bubbles

If a bubble is found after the **ALL DECK Coating System** application is completed, repairs can be made by using a hypodermic syringe to inject the bubble with **ALL DECK Hypo Mix**. (See *Figure 21*)

1. Determine the location of a bubble by rubbing fingertips on the surface of the area in question.
2. Using a nail the same diameter as the syringe needle, hammer the nail through the coating at an angle, on all four sides of the bubble. *Do Not* nail into the deck. These punctures will act as breather holes.
3. Fill the syringe with the **ALL DECK Hypo Mix**. Insert the needle into one hole. Inject a small amount of adhesive. Too much adhesive will create a hydraulic pressure effect, causing the bubble to grow larger.

## REPAIRS (Continued)

Figure 21



- Using your fingertips, apply pressure to the top of the bubble, to work the adhesive around, until a small amount of it oozes out of the holes. Use a damp rag to wipe away excess material.
- Place a piece of heavy plastic and a weight of some kind on the repaired area, until it has bonded to the deck.

## Cracks & Cuts

- Very Small Cuts:** Put **ALL DECK Textured Basecoat** into cut. Let dry. Apply **ALL DECK Finish Resin**.
- Large Cracks And Damaged Areas:** Coating should be removed and repairs made to the substrate. Re-apply coating. (See Figures 8a, 8b & 8c)

**NOTE:** Refer to the Fiberglass Section for Double-Cutting and Application Instructions.

## Cleaning

- Do Not:** do any of the following to clean an **ALL DECK** Coated surface:
  - Do Not** use mechanical cleaning devices, high pressure water or steam cleaning equipment on an **ALL DECK** coated surface.
  - Do Not** power blast an **ALL DECK** coated surface.
  - Do Not** use citrus or solvent based cleaners like 409, MEK, acetone, or lacquer thinner on an **ALL DECK** coated surface.
- Do Clean Surface With A Stiff Bristled Pushbroom and:**
  - ALL DECK Deck Cleaner**,
  - mild detergent such as Cascade Dishwashing Soap;
  - light abrasive cleaner;
  - diluted bleach; or
  - common household cleaners.
- Allow cleaning agent to sit on dampened surface for at least ½ hr. before scrubbing the **ALL DECK** coated surface. Keep area damp until scrubbing is completed.
- Rinse cleaning agent off deck with ordinary garden hose and low pressure (tap) water.
- After cleaning, stubborn stains and discolorations can be hidden by recoating surface with **ALL DECK Textured Basecoat** and **ALL DECK Finish Resin**. (See Appropriate Sections for Application Instructions)

## TECHNICAL INFO

### Atmospheric Conditions

- Keep the **ALL DECK** materials from freezing while in the containers.
- Do Not** apply **ALL DECK** materials if the ambient (air and surface) temperatures are below 50° F; or will drop below 50° F while the material is drying.
- For best results, the temperature should be above 55° F.
- Do Not** apply materials when inclement weather is imminent.
- Materials can be applied during cold or windy weather by:**
  - tenting the work area (See 1, 2 & 3 above). For best results, use commercial tenting. If none is available, attach/ hang canvas or plastic to railing from the roof or overhang above.
  - increasing temperature and air circulation in tented area by using a space heater and/ or fan to circulate warm air until temperature reaches at least 50° F.; keeping temperature at least 50° F until coating is dry.

- raising the deck temperature by flooding the deck surface with hot water until the temperature reaches at least 50° F. Sweep and/ or towel-off water before applying materials.
- The **ALL DECK** materials can be applied to a slightly damp/ moist surface, but not to a saturated surface.
  - Let excessively wet surfaces dry out before starting application process.
  - Do Not** cut, or laminate the Fiberglass Mat, or spray basecoat during windy weather.
  - High humidity may slow down (retard) drying and/ or curing time.
  - ALL DECK Patching Compound** and **FASTAC Construction Adhesive** will not adhere to hot metal.
  - To avoid lap marks, apply **ALL DECK Patching Compound** and **ALL DECK Finish Resin** during the coolest part of the day.
  - For best results when removing snow or ice from an **ALL DECK** coated surface, use a plastic shovel with rounded edges, rock salt, liquid de-icing chemicals, or a pushbroom.
  - Do Not** use mechanical equipment or any sharp objects to remove snow, ice, or dirt from an **ALL DECK** coated surface.
  - A high water table will prevent adhesion of the **ALL DECK Coating System** to on-grade slabs. To determine moisture content of slab before applying material perform a moisture test first.
  - The **ALL DECK Coating System** can withstand ponding water for up to three weeks; however, it is not designed to be permanently submerged in water. Therefore, it is important to properly grade all surfaces to achieve maximum drainage, and eliminate standing or ponding water.

## Color

- Do Not** add colorant to **ALL DECK** materials.
- Because there are slight color variations between batches, check batch numbers on all containers of **ALL DECK Finish Resin** before using. To ensure uniformity of color, if batch numbers differ, mix all of the **ALL DECK Finish Resin** together before using.
- When the **ALL DECK Patching Compound** is a different color than the **ALL DECK Laminating Resin**, brush a small amount of **ALL DECK Laminating Resin** over the dried **ALL DECK Patching Compound**. This prevents shadowing by blending-in and evening-out the color.
- Colors can affect the temperature of a coated surface. Dark colors are hotter than light colors. Medium colors show less dirt.
- Multi-colored surfaces may help camouflage dirt, or repairs.
- To change the color of an existing **ALL DECK** coated surface, apply both **ALL DECK Textured Basecoat** and **ALL DECK Finish Resin** in the new color.

## Curing

- Curing time is approx. 3 weeks. Weather conditions may prolong the curing process; as can thicker than recommended applications or extra coats of material.
- Acrylic coatings cure from the top down. Coated surface can be walked on as soon as it is dry to the touch, but no heavy objects (lawn furniture, large planters, or cars) should be placed on the surface until coating is fully cured. Thicker than recommended applications may feel slightly tacky until fully cured.
- Do Not** clean or scrub an **ALL DECK** coated surface during the curing period.

## Surface Care

- Do Not** place hot objects (such as hibachis) on the **ALL DECK** surface.
- Place rubber caps on legs of lawn furniture to prevent scarring, indentations, or discoloration.
- To prevent heavy objects, like planters, from scarring the coating, heavy visqueen should be placed between the object and the coating.
- Do Not** drag sharp objects across an **ALL DECK** coated surface.
- Periodic cleaning of an **ALL DECK** coated surface will enhance the appearance. While still wet, clean-up spilled paint, etc., with water.
- To prolong the life of an **ALL DECK** coated surface, repair damages immediately.

## TECHNICAL INFO *(Continued)*

7. Due to the nature of breathable acrylic coatings *Do Not* place solid mats, indoor-outdoor carpeting, or pads on top of the **ALL DECK** coating. If desired, plastic interlocking grid patterned tile can be used, instead.

### Storage

1. *Do Not* allow material to freeze while in containers.
2. In cold weather, store materials indoors at room temperature.
3. Partially used materials may be stored by placing a piece of plastic directly over material before tightly sealing container.
4. The shelf life of **ALL DECK** products, with the exception of **Patching Compound**, **Caulking Compound** or mixed **Textured Basecoat**, is approximately five years.
5. **ALL DECK Patching Compound**, **Caulking Compound** and mixed **Textured Basecoat** have a shelf life of approximately six months.
6. Pot life of **ALL DECK** products is the same as the shelf life, except **Level Quick** and **Fast Patch**, which is approximately 45 minutes.

### General Information

1. Expansion & Control Joints:
  - a. Concrete decks more than 10' x 10' in size should have expansion or control joints running in both directions at intervals of no more than 10' apart. Saw-cut joints into existing concrete, if none exist.
  - b. *Do Not* bridge expansion/ control joints with Fiberglass Mat, **ALL DECK's Level Quick** or **Fast Patch**. (See Page 1)
2. Sloping/Grading:
  - a. For best results, water test all surfaces before and after Fiberglass Mat and **ALL DECK Laminating Resin** have been applied.
  - b. Use a non-oily pen to mark areas that need sloping/ grading.
  - c. Do grading on top of laminated surface with **ALL DECK Level Quick**.
  - d. Apply second layer of Fiberglass Mat and **ALL DECK Laminating Resin** over sloped/ graded area only, feathering-out edges of fiberglass with **ALL DECK Patching Compound**.
3. Water Testing:
  - a. For best results, isolate areas and water test separately, to better identify all leaks in a structure.
  - b. Stuff drains and scuppers with rags or towels before water testing.
  - c. Remove rags or towels after water testing.
  - d. Have a helper inside to spot where the water enters the structure.
  - e. Water test windows, walls, doors, thresholds, drains, scuppers, and rails, separately.
4. ALL DECK's Level Quick & Fast Patch:
  - a. Use entire contents of pail when mixing dry components with water. Material will not set up properly if any dry powdered material is left in the pail.
  - b. Material should be applied in layers, letting each layer dry before applying next layer.
  - c. *If crazing or cracking occurs:* Repair by applying a thin slurry coat of **ALL DECK Patching Compound** over cracks/ crazed areas before fiberglassing.
  - d. Lightly sand dry repairs to smooth-out surface.
  - e. Since **Fast Patch** is a coarser material, apply a thin slurry coat of **Level Quick** over the dry **Fast Patch** to smooth-out the surface.
5. Stair Nosing:
  - a. To minimize wear, stair nosing is recommended on all square edge steps.
  - b. For proper drainage, slope treads away from riser; not towards risers.
  - c. Stair nosing should be cut 2" shorter than steps and centered, leaving a 1" space on each side of the nosing for water to drain off.
6. ALL DECK Patching Compound & ALL DECK Caulking Compound:
  - a. If patching is not done correctly, the finished deck will show all seam metal, flashing, patches, and repairs. The patching technique is the same as patching drywall. Feather-out each layer of **ALL DECK Patching Compound** with a larger knife to hide patches from view. Let each layer dry before continuing with the next layer. If needed, sand down edges before applying the **ALL DECK Coating System**.

- b. Patching Compound should not be applied more than 1/8" thick.
- c. Caulking Compound should not be applied more than 1/4" thick.
- d. Both should be applied in thin layers, which are built up to the correct thickness, and allowed to dry between applications.

### Imported Compressor

For best results, use the lightweight (36 lbs.), oil-less, 2 hp, Italian imported compressor. It puts out 100 PSI @ 4.10 ACFM, with a maximum pressure of 110 PSI. It operates on 115 volts at 13.20 amps. It has a carrying handle, feet for easy placement, an on/ off switch, and an adjustable pressure regulator with an air pressure gauge.

### Adjustments For Conventional Hopper Gun

1. Use smallest or second smallest opening in the orifice plate.
2. Install the smallest brass orifice tip (1/16" inside diameter).
3. Check trigger stop adjustment. Use proper CFM and air pressure adjustments.
4. Pressure hose should be no more than 1/4 - 3/8" in diameter.
5. Refer to air compressor instructions for recommended hose length.
6. Air compressor must have a minimum of 4.2 CFM at 50 PSI.
7. *Do Not* step on wet coating or drag hose through wet coating.

#### CAUTION:

1. Use with adequate ventilation. Avoid prolonged contact with skin, and breathing vapor or spray mist. Close containers after each use. *Do Not* transfer contents to bottles or other unlabeled containers. Harmful if swallowed, induce vomiting. Call physician immediately.
2. Keep out of reach of children.
3. Product composition is water-based acrylic.
4. Fitness for a particular purpose and merchantability are not warranted by manufacturer.

#### WARNING:

1. Contact with fiberglass may cause temporary irritation. Wear long-sleeved, loose fitting clothing when handling the material. Gloves and eye protection may be appropriate in certain operations. Wash with soap and warm water after handling. Use of a disposable mask, per OSHA 1910.134 Respiratory Protection Requirements, designed for nuisance-type dusts is advisable where high dust levels may be encountered.
2. Use of a disposable mask is recommended when handling the dry texture components.
3. Open containers are a safety hazard to young children. *Do Not* re-use empty containers. Dispose of empty containers immediately, and in a safe manner.

## FSC COATINGS PRODUCTS

ALL DECK LAMINATING RESIN	Bio-Control Prime & Seal
ALL DECK TEXTURED BASECOAT	Zero-Rust Metal Primers
ALL DECK FINISH RESIN	MaxLife Hi-Performance Paint
ALL DECK PATCHING COMPOUND	EB II WALL COATING
ALL DECK CAULKING COMPOUND	CONFETTI FINISH
ALL DECK DECK CLEANER	HYPOMIX
ALL DECK SPORTS COURT	HI-FLEX SYSTEM
SURE-FOOT DECORATIVE FINISH	
LEVEL QUICK LEVELING COMPOUND	
FAST PATCH DEEP HOLE FILLER	
Acrylic Caulking	

Limited **ALL DECK** material warranty is not valid unless issued in writing by manufacturer. To apply for a valid warranty, submit project information including material purchase records and project documents to Environmental Coating Systems, Inc., at completion of project.

## EQUIPMENT & SUNDRIES

- HOPPER GUN
- COMPRESSOR
- FIBERGLASS MAT
- FIBERGLASS MESH
- STENCILS
- FIBERGLASS RADIUS ROLLERS
- FIBERGLASS ROLLERS
- BACKER ROD
- SEAM METAL

• Items Are Available From:

**FSC COATINGS, INC. / All Deck**

5360 Eastgate Mall, Suite F

San Diego, CA 92121

PHONE: (858) 558-0800

(800) 255-3325

FAX: (858) 558-2159

E-MAIL: [info@alldeck.com](mailto:info@alldeck.com)

INTERNET: [www.alldeck.com](http://www.alldeck.com)