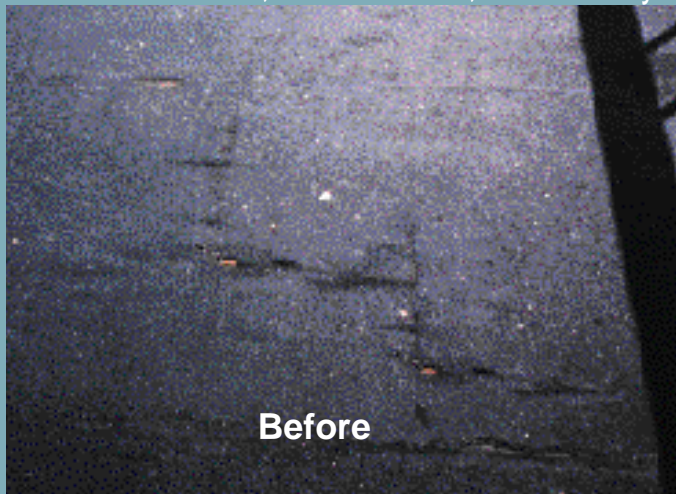
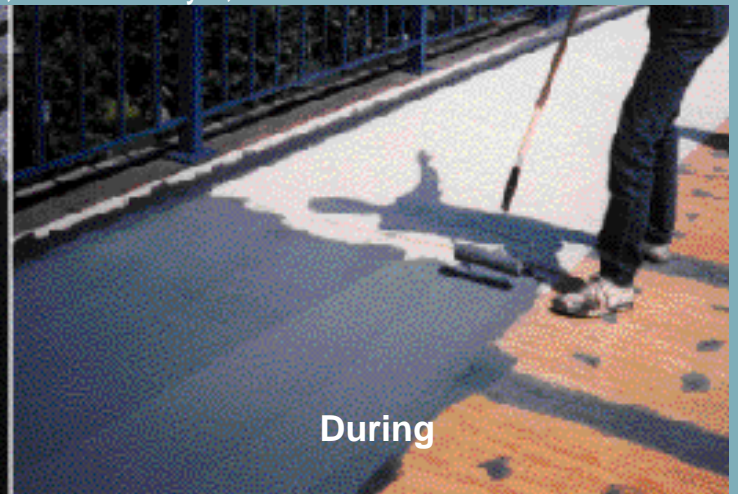


**Waterproof - Weatherproof - Fire Resistant - Skid Resistant**  
*The ALL DECK Coating System Protects, Repairs, and Beautifies*  
Decks, Balconies, Walkways, Driveways, and Pool Decks



Before



During



San Francisco, California

After



**ALL DECK**®

- Extends Life
- Increases Safety
- Improves Appearance
- Increases Property Values
- Reduces Maintenance



# Our Impeccable Reputation Just Won't Quit.

Beauty, versatility, durability, and unsurpassed quality; these are the benchmarks of a great traffic coating. . . . And that's exactly what you'll get when using the innovative ALL DECK Coating System.

Since 1975, ALL DECK has been responsible for success stories for architects, specifiers, contractors, and property owners, time and time again. With tens of millions of square feet applied worldwide, ALL DECK tops everyone's best seller list.

As one of America's leading waterproof traffic coatings, ALL DECK offers guaranteed protection for all walking and driving surfaces. Its unique non-toxic, waterbased acrylic formulation is both tough and flexible, providing a safer, cooler-than-concrete, seamless, skid resistant surface.

The user friendly system meets health, safety, and building codes for waterproof and fire performance standards and demonstrates total application versatility. You'll be impressed with the range and variety of ALL DECK's applications, and how fast, and easy the system goes down. It requires no special tools and fully adheres to a multitude of substrate surfaces. In fact, almost anything is possible with this creative, high-performance, cost-effective system.

- **Long Lasting**
- **Cost Effective**
- **Superior Performance**
- **Unparalleled Quality**
- **Improves Appearance**
- **Reduces Slip and Fall Accidents**
- **Reduces Surface Temperature**



*Upper Plaza Deck - Commercial Complex - Hong Kong*



*Hotel Concrete Pool Deck Huntington Beach, California*



*Rooftop Tennis Court Apartment Complex*



*Stairs Private Residence Cambridge, Massachusetts*



## Unequaled Quality, Performance, Value

ALL DECK has the best warranty around. While other products require frequent recoating to maintain their warranty ALL DECK doesn't have to be touched again because its made from the highest grade ingredients. ALL DECK stands up to extremes in weather and use like no other product on the market today. It holds up to rapid temperature changes, Ultra Violet exposure, heavy foot traffic, automobiles, freeze-thaw cycles, and normal expansion and contraction of the substrate.

ALL DECK surfaces are made to last, and last, and last! ALL DECK's unique formulation allows the material to breathe, eliminating that sub-surface moisture that causes other products to bubble and lift.

ALL DECK is one of the toughest, most enduring systems available, and the best choice for all weather conditions. Whether it's the sub-zero temperatures of Alaska, the raging heat of the desert, or the humidity of the tropics, ALL DECK weathers the storm.

Our continued dedication to supplying a coating system of unsurpassed quality, plus our long-standing reputation as a leader in our industry, makes it understandable why so many people choose ALL DECK. Whether you want to protect your balcony or roof from the elements, or you want a more comfortable, attractive pool deck that's safer to walk on ALL DECK is your answer.

**Shouldn't You Be Using ALL DECK On Your Next Project?**



The ALL DECK Coating System is a specially formulated, waterproof, fire-resistant, non-skid, textured coating system that is fiberglass reinforced and developed to protect a wide variety of walking and driving surfaces from damage and deterioration due to weather and traffic extremes.

**Uses:** ALLDECK is a multipurpose product that can be used in a multitude of applications; from commercial, to residential, to heavy industrial. It can be applied to any traffic bearing surface (walking or driving) and used on a wide variety of substrates, including:

- New & Old Concrete
- New & Weathered Plywood
- Masonry
- Asphalt/Bitumen
- Metal
- Magnesite/Diatom
- Exposed Aggregate in Concrete or Epoxy Matrix
- Previously Coated Surfaces

**Colors & Designs:** ALLDECK is available in 26 exquisite designer colors, as well as custom colors. It's easy to create unique, one-of-a-kind decorative designs using ALLDECK's Confetti™ Finish, Splatter™ Finish, and/or faux finishing techniques to simulate granite, marble, terrazzo, and stone. There are 18 standard stencils available to make surfaces look like real brick, stone, tile, or pavers. Transform any surface into a stunning work of art; or incorporate a company logo, or school masthead onto any surface.



Condominium  
Simulated Mexican  
Paver Pattern  
Mission Viejo,  
California

#### ALLDECK Advantages

ALLDECK is quick and easy to apply, and requires no special tools or safety equipment.

ALLDECK is virtually weatherproof and provides a seamless, non-skid, cooler, more attractive surface. Plus it's waterproof and fire resistant, giving you a durable surface that will last for years, even under heavy usage.

The texture can be modified to accommodate project requirements including lowering profile for sports surfaces, or increasing traction for handicap ramps and walkways.

ALLDECK won't leak, peel, chip, bubble, lift, or crack due to weather conditions or heavy use. It cleans easily and is virtually maintenance free.

Use ALLDECK to repair old or damaged surfaces, waterproof an area, or protect a new surface. No matter how you use it, you're guaranteed a beautiful new deck surface each and every time!

ALLDECK is environmentally safe so you can restore and beautify any surface without endangering the environment.

**Technical Data:** The ALL DECK Coating System has been tested by approved testing laboratories in accordance with I.C.B.O. Standards for the following properties:

#### For Walking Roofs:

- Class A Fire Rating over Non-Combustible Surface
- Class B Fire Rating over Combustible Surface
- Flame Spread: 30
- Fuel Contribution: 10
- Smoke Density: 5 (per ASTM E 108)
- Spread of Flame (per ASTM D 108)
- Intermittent Flame (per ASTM E 108)
- Burning Brand (per ASTM E 108)

#### Standard:

- UBC 32-7
- U/L790
- NFPA Class B
- UBC Class II

#### Additional Tests:

- Breaking Strength: 40-132 lbs./in.
- Elongation: 21-32% (per ASTM D 2523)
- Peel Strength: (per ASTM D 903) lbs./in.
- Plywood: 11-18 - Concrete 3.3-7.6
- Vapor Transmission: (per ASTM E 96) 0.18-0.22 grms./hr./m<sup>2</sup>
- Waterproofness: (per ASTM D 3393) 2 weeks of 1/4" water pressure, no detectable water
- Coefficient of Friction: (per ASTM D 2047-82)  
Sprayed: Avg. 0.64  
Rolled: Avg. 0.58  
Troweled: Avg. 0.67
- Abrasion Resistance: (per ASTM D 1242) 2 oz. Sample: 2.574 cubic cm<sup>3</sup>, (19.5 mils thickness)  
Accelerated Aging test, ASTM D- 756  
Procedure D: Free Film/ -1.2%  
Plywood Substrate/ - 6.6%  
Concrete Substrate/ - 1.1%  
Procedure E: Free Film/ -1.5%  
Plywood Substrate/ - 4.7%  
Concrete Substrate/ - 0.9%

- Tensile & Elongation Test, ASTM D 751:  
Post Accelerated Aging Average  
Procedure D - 10202.0- 5.5  
Procedure E - 7435.4- 4.98
- Bond Strength Test, ASTM C297:  
Post Accelerated Aging Plywood Average:  
Procedure D: Ultimate Load 934.86  
Bond Strength 103.89  
Procedure E: Ultimate Load 827.23  
Bond Strength 94.24
- Post Accelerated Aging Concrete Average:  
Procedure D: Ultimate Load 1079.24  
Bond Strength 46.12  
Procedure E: Ultimate Load 1195.76  
Bond Strength 51.94
- Percolation Test, Acceptance Criteria For Walking Decks:  
Drop in Water Column after 48 Hours  
Average: 0.16 Inches
- Weatherometer Test, ASTM G23:  
2000 Hour - There was no evidence of surface cracking, blistering, flaking, chalking, or any other deleterious effects.
- Tensile & Elongation Test, ASTM D751 - Average  
Procedure B:  
After 2000 Hours, Max. Load Lbs (436)- Tensile Stress (PSI) 7,726-Elongation @ Break-4.8
- Water Absorption Test, ASTM D570 -Average: 4.63%
- Thermal Properties  
ALL DECK Cement  
Avg. Rate of Heating 0.9° F/min. 1.1° F/min.  
Maximum Temp. 131° F 144° F  
Avg. Rate of Cooling 1.1° F/min 1.0° F/min.
- VOC (Volatile Organic Compounds) Less than 35 g/l  
Non-toxic- Emits no noxious fumes

Test results are available upon request.

#### Limitations:

ALLDECK is not intended to be used as a below grade or permanently submerged waterproofing system. It should not be applied at temperatures below 50 degrees F.

#### Warranty:

10 Year Limited Material Warranty: To be valid warranty must be in writing and issued by manufacturer at completion of application.

#### Application Methods:

Preparation Work: Prepare substrate in accordance with manufacturer's printed application instructions.

ALLDECK is applied in three layers. The fully adhered system is applied over the entire substrate. It includes compatible preparation and repair materials.

The roller applied first layer consists of Fiberglass Mat bonded to the prepared substrate with ALLDECK Laminating Resin.

The second layer is the ALL DECK Textured Basecoat which is applied by roller, brush, trowel, or hopper gun.

The third layer is the ALLDECK Finish Resin applied by roller.

Curing time is 2 to 3 weeks, however, ALLDECK may be walked on as soon as it is dry to the touch.

#### Maintenance:

Periodic cleaning with a stiff bristled push broom, ALLDECK Deck Cleaner, and plain water.



#### Other Great Products from Environmental Coating Systems, Inc.

- Sure-Foot® Decorative Finish
- Top-Side® Marine Coating
- Level Quick
- Hi-Flex Waterproof Membrane
- EB II Wall Coating
- Fast Patch
- X-R Roof Coating
- ALLDECK Deck Cleaner

Maze - Southwest Design - Morris Udall Regional Park - Tucson, Arizona



from: Environmental Coating Systems, Inc.

668 N. Coast Hwy #511 • Laguna Beach, CA 92651  
(949) 497-4562 • FAX (949) 497-8493 • Toll Free: (800) ALLDECK (255-3325)  
Website: www.alldeck.com • E-Mail: info@alldeck.com

©2000